

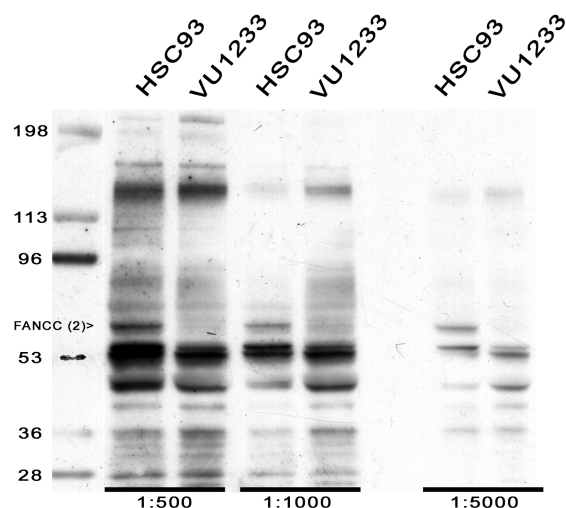
RESULTS EFFICIENCY TESTS ANTIBODIES FARF:

antibody	Direct WB	IP > WB		remarks
FANCC (1) ^{***}	Not visible	Not visible	--	
FANCC (2) ^{***}	Visible (1:5000) See picture #1	Not visible	✓	Direct WB: Very clear band
FANCD1 (1)	Visible (1:5000) See picture #4	Not tested	✓	Direct WB: Very clear band
FANCD2 (2) ^{***}	Visible (1:5000) See picture #5	Not tested	✓	Direct WB: Very clear double band
FANCE	Visible (1:5000) See picture #2	Not visible?	✓	After 10 minutes Super ECL
FANCF ^{***}	Not visible ?	Not visible	--	
FANCG (1) ^{***}	Not visible	Not visible	--	
FANCG (2) ^{***}	Not visible ?	Visible (1:500) IP ab: GP12 See picture #2	✓	

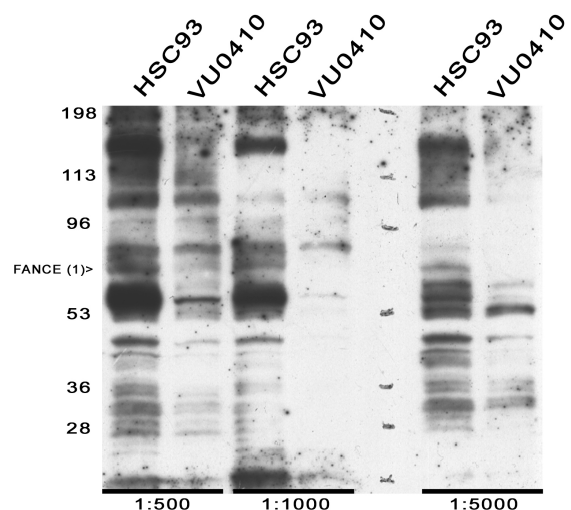
? : not entirely sure / unable to visualize

^{***} In agreement with Maureen

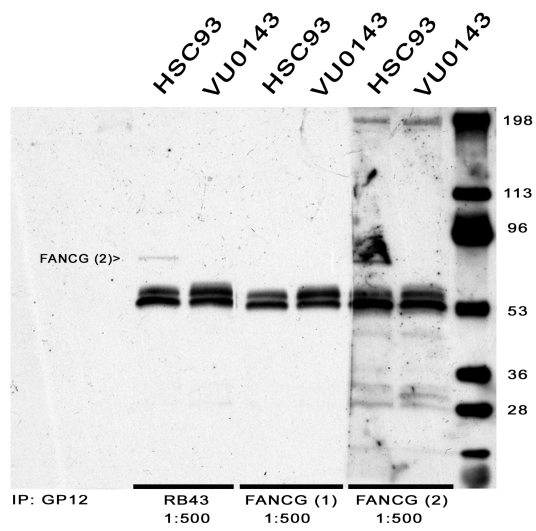
Picture #1:



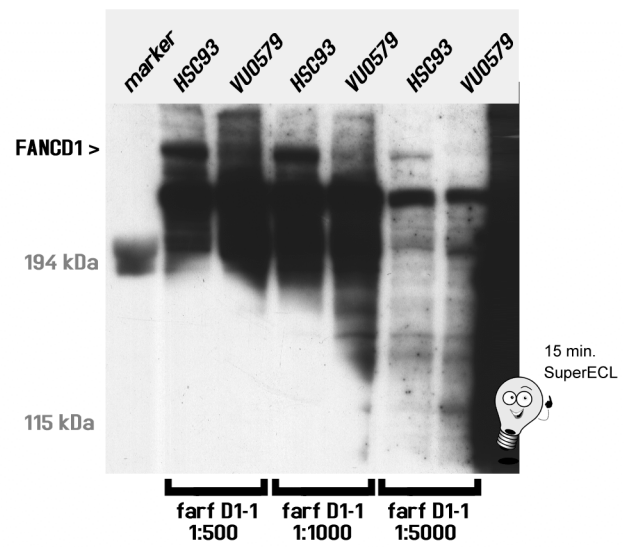
Picture #2:



Picture #3:



Picture #4:



Picture #5:

